

*"Heart of Ice"  
sculpture by Judi Lemaire*

### *Images from the GWAC Annual Members' SHOW*



*Top Left - Watercolor by Helene Pierce  
Top Right - Mixed media collage by Ann Tracy  
Left - Acrylic painted tiles by Ruth Willette*



The GWAC Annual Member Show takes place each November at the Wolfeboro Library. All current dues-paying GWAC members are welcome to participate. Over 2 dozen works were submitted and hung by Suzette Winchester.

Governor Wentworth  
ARTS Council  
PO Box 1578  
Wolfeboro, NH 03894

*cover photo by  
Barbara Gray*

**WINTER 2016-17**

[wolfeboroarts.org](http://wolfeboroarts.org)

*A quarterly publication for members and arts supporters*

**Message from the  
Co-Presidents** 2

**SURVEY  
HIGHLIGHTS** 2

**BIRD FEEDERS** 3



**ART & BLOOM** 4

**PHS FUND  
Recipient** 4

**ARTISTS' NEWS** 5



**TABLESCAPES** 6

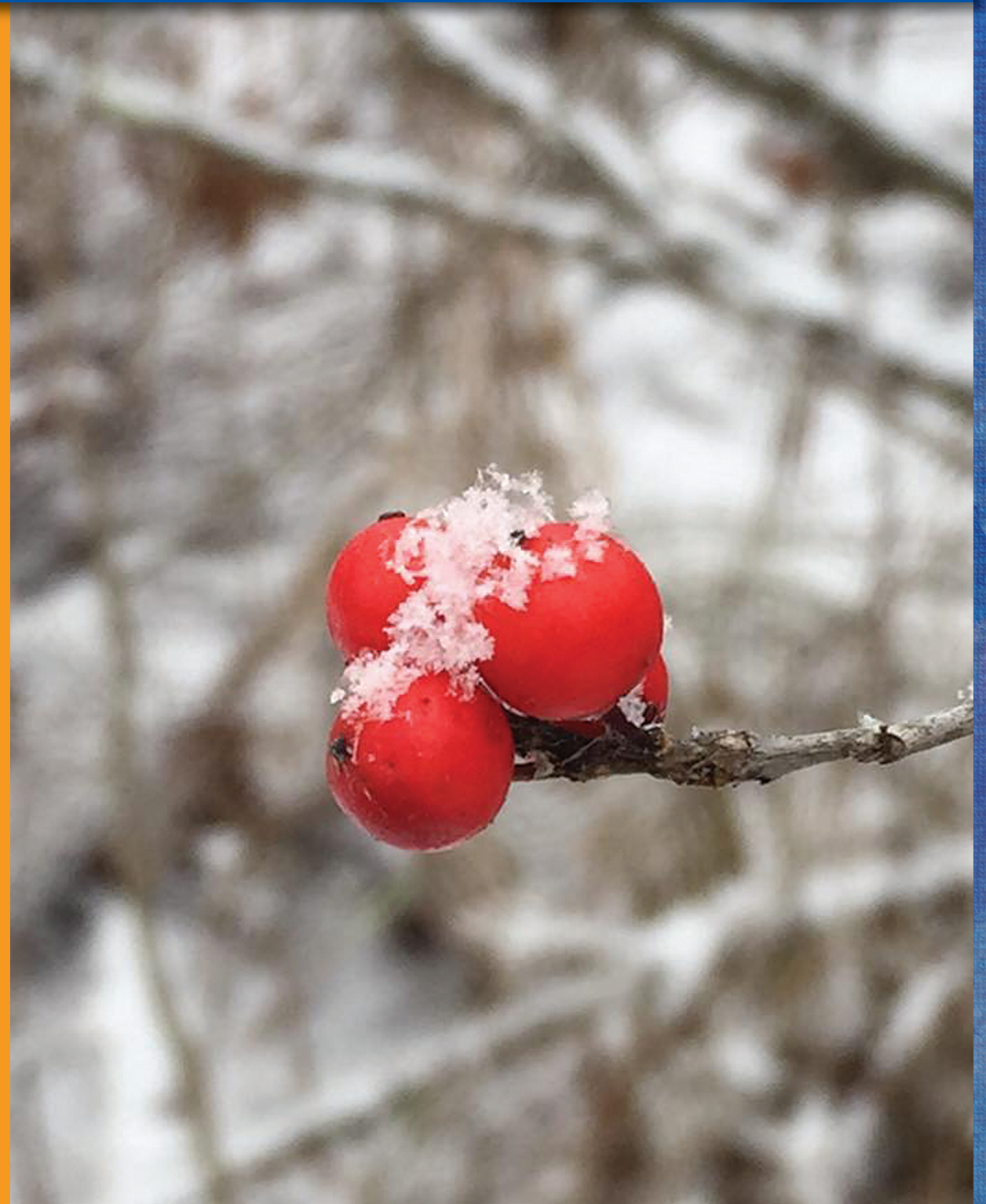


**regional MUSEUM  
SHOWS** 7



**Images from the  
GWAC Annual  
Members' SHOW** 8

# Governor Wentworth Arts Council



## Message from the Co-Presidents

### REVIEW OF 2016

GWAC successfully completed another season promoting the arts in Wolfeboro.

The season started off with the **ART WALK** in May. The galleries had a very successful summer and early fall and will continue this event in 2017.

The GWAC group decided not to participate by exhibiting their work down at Durgin Green.

The reasons include; unpredictable weather, the three hour limit to exhibit, and the dwindling participation.

Jerome Holden and Jeannette D'Onofrio were the creators of the event and devoted so much of their time to make this happen. Many, many, thanks to you both for all that you did to make it so successful.

Other events that took place were; **PAINT Wolfeboro**, continuous art exhibits at the MVSB and Huggins Hospital which are open to all GWAC members, the distribution of 15 handmade bird feeders to two nursing homes and Sugar Hill, lead by Di Simpson's efforts, ending with the annual fall Member Exhibit and Reception at the Wolfeboro Public Library with guest speaker Corina Willette.

What is going to happen in 2017? Well, we know we have scheduled **TABLESCAPES** for March, **ART & Bloom** in June, **PAINT Wolfeboro** in August, and the Fall Member exhibit and Reception...Wow, that's a lot! The board will meet in January, 2017 to review the results of the November GWAC Survey, which gave us a wealth of information. Decisions for our future will be made based on this information. Here are some of the highlights of the Survey....

### SURVEY HIGHLIGHTS

1. Out of the 153 surveys sent out we received 40 responses.

2. There was an overwhelming response to have only two business meetings a year (April and October) and two gatherings, a Potluck (Spring) and the Member Artists Reception at the Library (Fall).

3. Keeping the meetings at the same location. There were too many comments to list as to the date and time of the meetings however.

4. Most not in favor of having a meeting at a home with critique of work. *If this happens there should be guidelines set up first to make a positive experience for all. This could be intimidating for some. An art professional should be chosen to critique.*

5. There is a need to have more members participate in all our activities. And few suggestions or enthusiasm as to how to obtain new members. "Most of our members are not of the age to engage with young adults." (This was a quote from a member!)

6. Members love the idea of exhibiting their work throughout the town and listed locations the committee could investigate.

7. We all need to be made aware of the opportunities that the Priscilla Hodges Scholarship fund offers. New PHS members are needed to join the committee and a new Committee chair needs to be chosen.

(see pg 3 for more)

## OFFICERS 2017

**co-Presidents**  
Diane Simpson  
Polly Cain

**Vice President**  
Mike Connolly

**Secretary**  
Judi Lemaire

**Treasurer**  
Jerome Holden

## COMMITTEES

**Membership & Marketing**  
Jeannette D'Onofrio

**PAINT Wolfeboro**  
Madelyn Albee & Debbie Hopkins

**Priscilla Hodges Scholarship**  
Nancy Piper  
Treasurer: Suzette Winchester

**GWAC ART-Displays**  
Debbie Hopkins & Martha Koons

**Art in the Library**  
Betty Brown

**Grants to  
Schools & Libraries**  
TBA

**TABLESCAPES**  
Jeannette D'Onofrio

**Newsletter/e-ART Clips**  
Jeannette D'Onofrio  
**Email Art News to:**  
j@virgodesignstudio.com  
(Spring Deadline: March 1, 2017)



**Editorial Credits**  
Diane Simpson, Polly Cain,  
Barbara Gibbs  
Jeannette D'Onofrio

**Photo Credits**  
Elizabeth Helfer,  
Barbara Gray, Judi Lemaire,  
Elissa Paquette(Salmon Press),  
Barbara Gibbs  
Jeannette D'Onofrio



printing provided by:  
Lilac Printing  
189 Wakefield St.  
Rochester, NH 03867  
603-332-0511 lilacprinting.com

## regional EXHIBITIONS & MUSEUM SHOWS



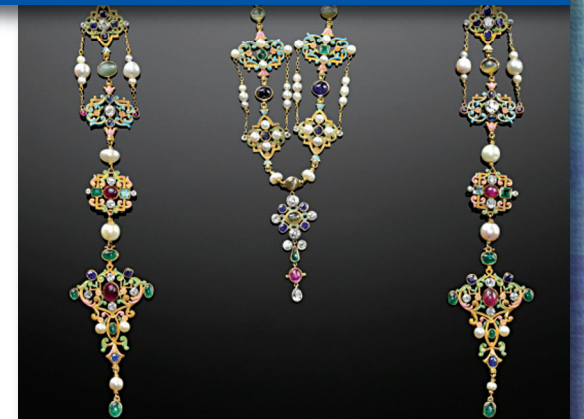
Museum of Fine Arts  
Boston

Avenue of the Arts  
465 Huntington Avenue Boston, MA 02115  
www.mfa.org  
Adult, Youth, School, & Group Visits: 617-369-3310;  
groups@mfa.org  
HOURS: The MFA is open 7 days a week.

### Past Is Present: Revival Jewelry

February 14, 2017 – August 19, 2018

Rita J. and Stanley H. Kaplan Family Foundation Gallery (Gallery 104)



Whether copying or choosing motifs to reinterpret, jewelers have always looked to the past for inspiration. The practice became popular in the 19th century, as designers like Castellani, Giacinto Melillo and Eugene Fontenay began reviving examples of ancient ornaments, newly unearthed in archaeological excavations. Examine more than 4,000 years of jewelry history through about 70 objects—both ancient and revival—tracing the revival movement from the 19th to the 21st centuries. The exhibition focuses on four types—archaeological, Classical, Egyptian, and Renaissance. Highlights include a 1924 brooch, on loan from Cartier, paired with an Egyptian winged scarab (740–660 BC) with a similar design; an 1850s embellished gold brooch by Castellani; a Renaissance revival neck ornament (1900–04) designed for Tiffany & Co.; a 1980s Bulgari necklace adorned with Macedonian coins; and a 2002 Akelo pendant that emulates an ancient Etruscan granulation technique.

Above: Designed by G. Paulding Farnham for Tiffany & Co., Renaissance revival neck ornament, 1900–04. Platinum, gold, enamel, diamond, ruby, emerald, cat's eye, chrysoberyl, sapphire, and pearl. Gift of Susan B. Kaplan.



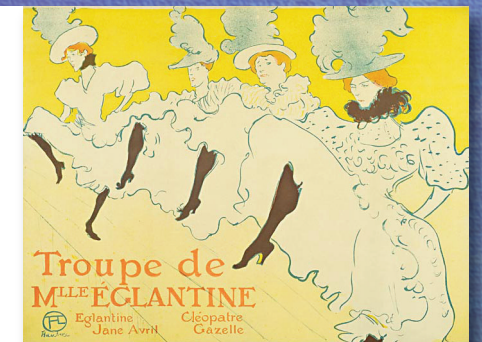
150 Ash Street  
Manchester, NH 03104  
603.669.6144  
www.currier.org

### The Paris of Toulouse-Lautrec: Prints and Posters from The Museum of Modern Art

September 30, 2017 - January 7, 2018

Henri de Toulouse-Lautrec's instantly recognizable posters are fixtures on the walls of millions of homes worldwide. Although the original works of art are more than 100 years old, their continued prevalence is a reminder of the influence he continues to have on art, and especially graphic design. Lautrec's often colorful lithographs reveal the enduring beauty of Paris. They also feature the city's more shadowy figures, whose lives the artist celebrated through his art. Drawn from the collection of the Museum of Modern Art, the Currier's exclusive New England presentation will present more than 100 posters, prints and illustrated books. The exhibition is organized by Sarah Suzuki, Associate Curator, Department of Drawings and Prints, The Museum of Modern Art, New York.

Henri de Toulouse-Lautrec (French, 1864–1901), *La Troupe de Mademoiselle Églantine* (Mademoiselle Églantine's Troupe), 1896, Lithograph, sheet: 24 1/4 x 31 1/4 in. (61.6 x 79.4 cm), The Museum of Modern Art, New York. Gift of Abby Aldrich Rockefeller, 1940, Photograph: Thomas Griesel.



TABLESCAPES “Creative Settings”®

from Jeannette D’Onofrio

Welcome to the 3rd Annual TABLESCAPES 2017 - a GWAC fund raiser event!

Creative minds and crafty ideas are already forming to present a wonderful display of table top designs.

The early deadline to participate doesn’t close till Jan. 1, 2017 - so if you have an idea and a few friends who would like to work on a display - GO FOR IT! Participation is open to Individuals, Businesses, and Non-Profit Organizations. There is no cost to participate. (there are a few restrictions to themes- please check the web-site for details.) Registration forms are available on the GWAC website: wolfeboroarts.org. Click on the link and download a copy today!

By this printing, we have only 5 table display spaces remaining. We will create a waiting list after the January 1 deadline.

We also need your “TABLE STORY” which explains your inspiration for your display. This “STORY” will be placed in the full color printed Program Guide for the event. Each person attending the tour will receive a Program.

We have also included advertising space for local businesses who wish to support the event, plus a special section for our generous sponsors. Please contact Jeannette if you would to help sponsor the event.

General advertising space is just a touch smaller than a business card and is only \$25... contact the event chair, Jeannette, for details: j@virgodesignstudio.com.

GWAC members will be contacted by Judi Lemaire to help tend the admission table on the touring dates: March 24, 25 & 26, 2017.

You may also be contacted by Barbara Gray to be a demonstrator on those touring dates.

This year we have reduced the rate to attend the Gala opening cocktail reception on Thursday March 23 at 7:00pm. Enjoy an evening of live music, watch as participants win awards and nibble on the delectable chef-prepared hors d’oeuvres. Tickets to attend will be \$40/pp and GWAC members can attend for \$35/pp (no ticket sales the evening of the Gala, advance tickets only). TABLESCAPES participants and artist demonstrators receive a gratis ticket to attend. Tickets will be on the GWAC website to download by February.

Tour the event with the general public for just \$5/pp on Friday, March 24, Saturday, March 25, or Sunday, March 26th from 10am to 4pm at the Wolfeboro Inn - Main St. Wolfeboro. Come to see who won top honors for their creativity! Thank you to the Wolfeboro Inn our generous venue location once again this season!

Small selection of photos from 2016 (top to bottom)- “Barneyard Bunch”, Dora Clarkson, “Lunch with Harry Potter & Friends”, Marcia Norris & Martha Lincoln, “Whimsical Nature - Teenage Interpretations”, KRHS Sculpture Class, “Looking from Yesterday to Today”, Mari Leather

Photos by J. D’Onofrio



Message (cont.)

SURVEY HIGHLIGHTS

8. There is interest in having more classes/workshops offered with suggestions in the various mediums. This is also a wonderful way to invite the public to join in. This could be a way to obtain new members.
9. It is very important to have many people actively involved in an organization so that the work is spread out. If only a few are involved, that leaves very little time for favorite pastimes and creativity for those few involved members which results in quick burn out.

So much of this information was so well expressed. Thank you all for your input!

**Polly Cain, Co - President**  
Also for **Di Simpson**, who is recovering from major back surgery.

.....  
Be sure to read more about what the board decides from this survey in eART Clips News Briefs, our Facebook page, the local newspapers and in the spring issue of the GWAC newsletter.



GWAC tree at Festival of Trees 2016

BIRD FEEDERS

from Diane Simpson

Hi All,

The idea for the bird feeders came about in May this year after deciding that the theme for the new year was to be YOUTH and ART EDUCATION. The recipients of the bird feeders: Sugar Hill Retirement Community, Wolfeboro Bay Center and Mountain View Nursing Home would receive 5 bird feeders each along with some bird seed.

The 4-H Extension for Carroll County located in Conway assembled the 15 bird feeders over the summer. Claes Thelemarck, Extension Field Specialist with the UNH Cooperative Extension, delivered them to the Kingswood Youth Center. Mara Lamb, Activities Director at Kingswood Youth Center, gathered some interested youth to prime and paint the feeders.

On November 2, the Kingswood Youth Center delivered 5 feeders to Mountain View Nursing Home. Howard Chandler, Administrator, along with 2 residents, the students and Youth Center volunteer, Mallory Stephens, Mara Lamb, and Diane Simpson had their picture taken. The bird feeders are painted all different colors and decorated with everything from a snow covered mountain to stripes and swiggles.

The Youth Center bus then traveled to Sugar Hill Retirement Community and were greeted by Chris Coulter, Director and Amy, Activities Director.

On November 3, the group delivered the last 5 to Wolfeboro Bay Center on Clipper Drive in Wolfeboro. The outdoor acrylic paint was donated by Johnson Paint and Wallpaper of Wolfeboro. The budding artists from the Youth Center were very enthusiastic about the project and enjoyed the field trip to each recipient.

A grant was written by Judi Lemaire and received by the Bald Peak Community Fund, who happily donated to our cause. The Bald Peak Community Fund was founded in 2002 with the intent to give support to our neighbors and communities in need of essential services food, heat, youth programs and care giving. We were thrilled to accept their generous support !

Best,  
Diane



photo  
Elissa Paquette  
- Salmon Press

## ART & BLOOM



from Polly Cain, event chair

GWAC is sponsoring a new event to occur at the Wolfeboro Town "Great" Hall on June 10, 2017 from 10 to 4pm.

In September 2016, many GWAC members came together to submit their artwork, while floral arrangers/designers from around the Lake chose an art piece to interpret into a floral arrangement. The artist and floral arranger will come together again in June to create a wonderful combined display for us all to view.

We have a total of 15 floral designers who will be making an arrangement to go with an art piece AND more are welcome! If you know of a friend who likes to work with flowers, please have them contact me. The committee is always in need of more members, so come June, there will be a need for volunteers. The success will depend on us all. Of course this is a fundraiser to support art education in our local schools and libraries.

Please email Polly at: [pollywerks@aol.com](mailto:pollywerks@aol.com) or call 603-569-1190 to join us.

## PHS Fund Recipient



from Barbara Gibbs, The Art Place

On Sunday, November 13, The Governor Wentworth Arts Council (GWAC) had the Annual Artists' Reception at The Wolfeboro Public Library, at 259 S. Main Street, Wolfeboro, NH from 2 to 4pm. The annual event was an opportunity to view artwork by members of GWAC, as well as socialize. Also featured was a presentation by Corina Willette, a local artist who was recently awarded a grant from The Priscilla Hodges Scholarship Fund, a subsidiary of GWAC.

GWAC established a scholarship fund in the late 1980s in memory of Melvin Village resident and artist Priscilla Hodges Saunders. An early member of the Governor Wentworth Arts Council, she studied and painted local landscapes and New Hampshire points of interest. In her desire to continually expand her artistic knowledge and painting skills, Hodges attended special artists' workshops around New England. The Priscilla Hodges Scholarship Fund is designed for adult applicants in the Lakes Region of New Hampshire who want to enhance their art education by participating in a special fine art workshop, seminar or continuing education course.

In addition, the fund also has underwritten artists' workshops on topics such as watercolor, acrylic and oil painting, as well as drawing and pastel painting seminars.

You can find applications on the GWAC website at: [wolfeboroarts.org](http://wolfeboroarts.org), they are also available at The Art Place, 9 North Main Street, Wolfeboro and The Blue Shutter Gallery, 19 Lehnner Street, Wolfeboro.

This year Corina Willette of Osippee was the recipient of a Priscilla Hodges scholarship to be used toward her residency at Vermont Studio Center in Johnson, VT. She presented an artist talk and slide show about her time spent there. The Vermont Studio Center was founded by artists in 1984, and is situated along the banks of the Gihon River in the historic village of Johnson, Vermont. The Center was chosen with the intention of fostering creativity through community, collaboration, and quiet reflection supported by the unspoiled beauty. The Vermont Studio Center has grown to become the largest international artists' and writers' residency program in the United States.

This residency allowed Corina four weeks of intensive studio work including mentor critiques. Corina, a graduate of NHIA with a BFA in Studio Arts, has exhibited widely throughout New Hampshire, Maine and Connecticut. Her field of interest includes oils, water-colors, and found and man-made materials.

## GWAC Artists' News

### GWAC WOLFEBORO WINTER EXHIBITS *from Polly Cain*

The winter art exhibits at the local Meredith Village Savings Bank and Huggins Hospital are up and ready for viewing. The MVSb is showing the work of Dora Clarkson. She has many lovely watercolors for you to see. The Huggins Hospital exhibit captures the work of many GWAC members using various mediums. Please take a look or stop by when visiting the bank or hospital. All the artwork is for sale. Contact Deb Hopkins 603-569-4994 if interested in purchasing a piece. Many thanks to the hospital and the bank for supporting the GWAC artists. Exhibit Co coordinators are Deb Hopkins and Martha Koons.

### OPEN CALLS for the National Conference on Contemporary Cast Iron Art & Practices

*from Elizabeth Helfer*

The National Conference on Contemporary Cast Iron Art and Practices is a biennial convergence of students, educators, academics, and professionals dedicated to exploring and advancing cast iron as an art medium. It is also a great opportunity for novices to learn about the processes and community behind the material. The NCCCIAP is hosted at Sloss Furnaces National Historic Landmark, an iron furnace with a storied past, located in Birmingham, AL. Participants will get to immerse themselves in the industrial history of the site while attending panels, demonstrations, performances and exhibitions that explore cast iron in contemporary art practice.

The NCCCIAP has just released open calls for exhibitions, demonstrations, and presentations. April 5 - 8, 2017. To learn more or get involved please visit: <http://www.nccciap.com/>

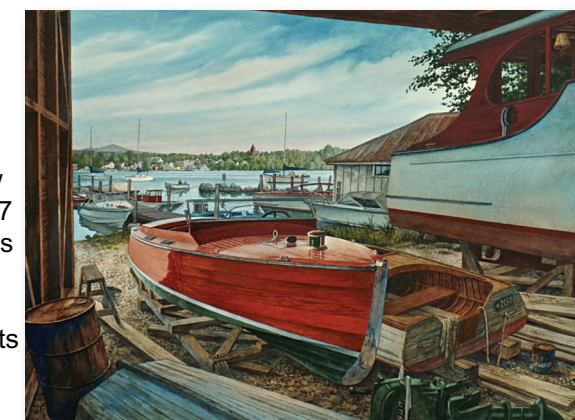


*Liz Helfer "skimming" slag  
Sloss Furnaces National  
Historic Landmark*

### PETER FERBER WINTER SHOW

*from The Art Place*

Peter Ferber's Winter Show Saturday, February 18, 2017 Beloved artist Peter Ferber's much-awaited winter show will include all new original paintings. His work highlights local scenes of the Lakes Region. Opening and artist reception at 9:30am. (Snow date February 19 at 11am.) The Art Place is located at 9 North Main St. Wolfeboro, NH.



*(above) Ferber painting titled  
"Relegated to the Future"*



*(right) Ferber at an artist  
demonstration*